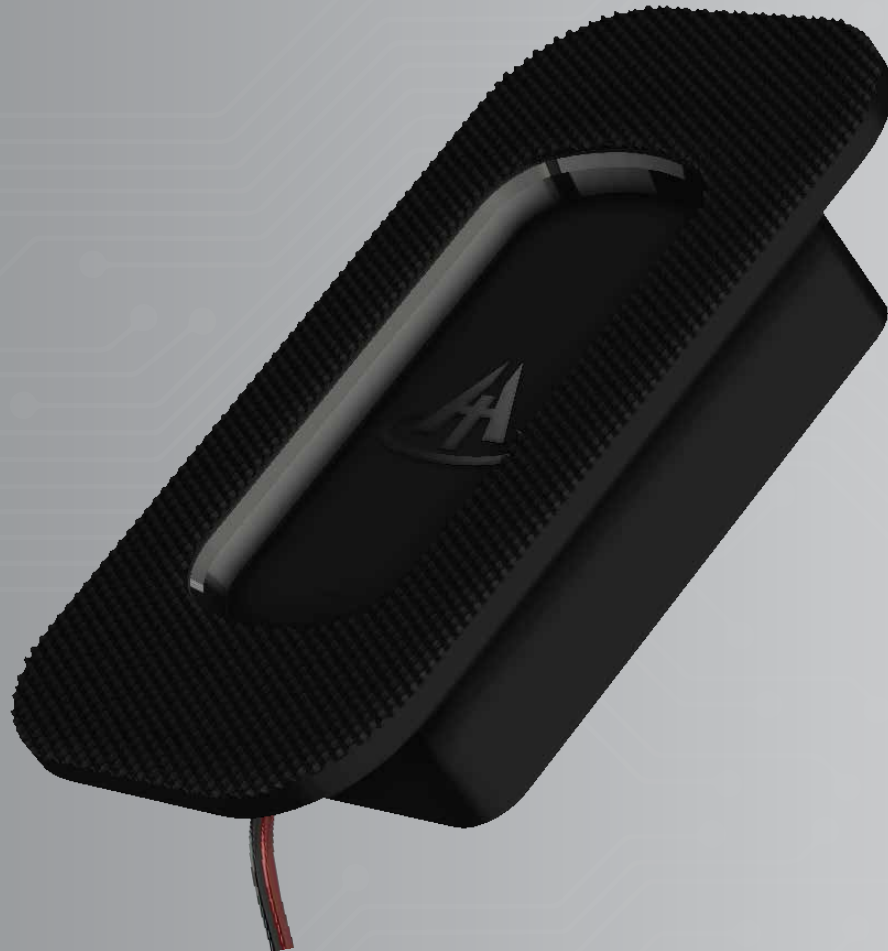




American Technology
COMPONENTS, INCORPORATED

ATC WC SERIES

SURFACE MOUNT WIRELESS CHARGER



FEATURES

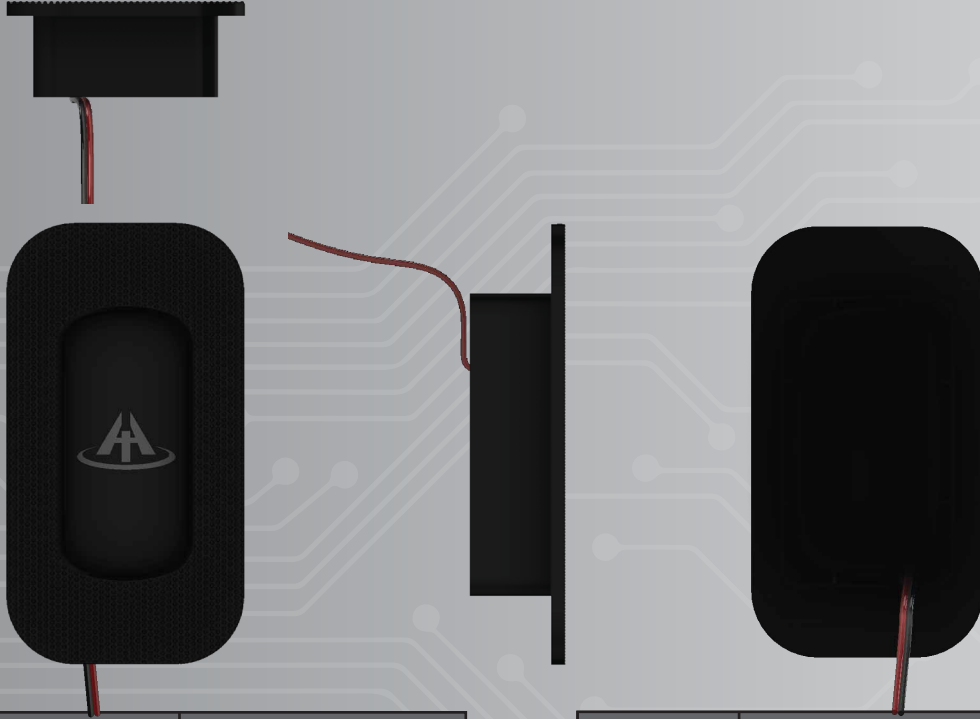
- FUTURE PROOF 15W FAST CHARGING PROFILE *
- CHARGE THROUGH 9MM OF NON-METALIC MATERIALS
- **POPSOCKETS** FRIENDLY PROFILES ALLOW FOR FAST CHARGING
- QI CERTIFIED IN COLLABORATION WITH NUCURRENT
- CUSTOM PROFILES AND DESIGNS AVAILABLE
- CONSTRUCTION AND COMPONENTS SELECTED TO LAST A LIFETIME
- MANUFACTURED IN THE U.S.A.

*VS. INDUSTRY STANDARD 5W PROFILES



ATC WC SERIES

SURFACE MOUNT WIRELESS CHARGER



SPECIFICATIONS:	
OPERATING VOLTAGE	9V DC - 16V DC
MAX CURRENT DRIVE CAPABILITY	10A DC
IDLE DRAW/STANDBY CURRENT	60 mA at 12 V
OPERATING TEMPERATURE RANGE-	40°C - 85°C
CHARGES THROUGH	9MM OF NON-METALIC

PART #'S	
WCA-SURF	WIRELESS CHARGER SERIES, SURFACE MOUNT DESIGN

